

REDAPTIVE | ONE

## Unlock Transformative Insights for Efficient Energy and Sustainability Management

*Embrace a future where energy efficiency,  
operational savings, and environmental  
stewardship harmoniously coexist.*



REDAPTIVE®

# Overcoming Multi-Stakeholder Challenges in Energy and Sustainability

In the dynamic landscape of energy and sustainability, organizations face a multitude of challenges that require collaboration and alignment across various stakeholders.

### FOR ENERGY LEADERS:

Difficult to track energy waste. Hard to measure the effectiveness of energy projects. Limited data insights for next opportunities.

### FOR SUSTAINABILITY LEADERS:

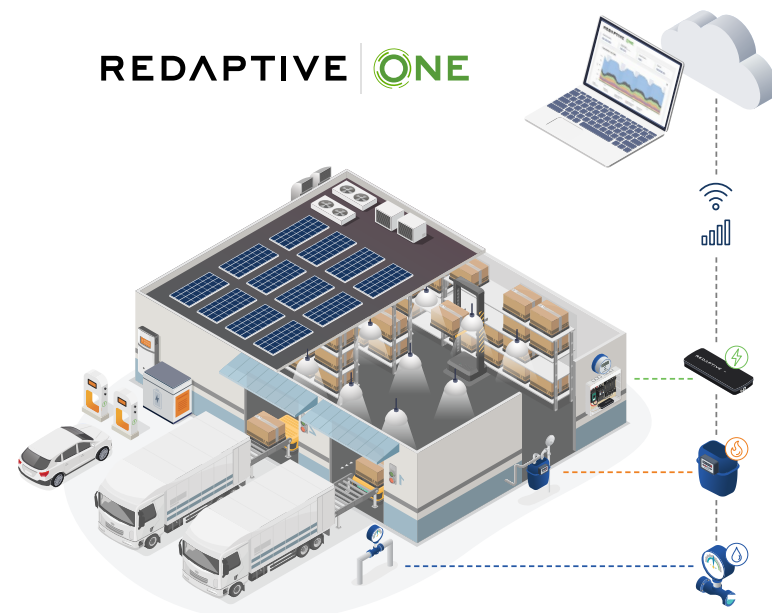
Struggle to establish baselines and perform compliance reporting due to limited access to utility data in an organized and routine format.

### FOR FACILITY LEADERS:

Challenging to manage exponential repair and maintenance costs along with failing equipment.

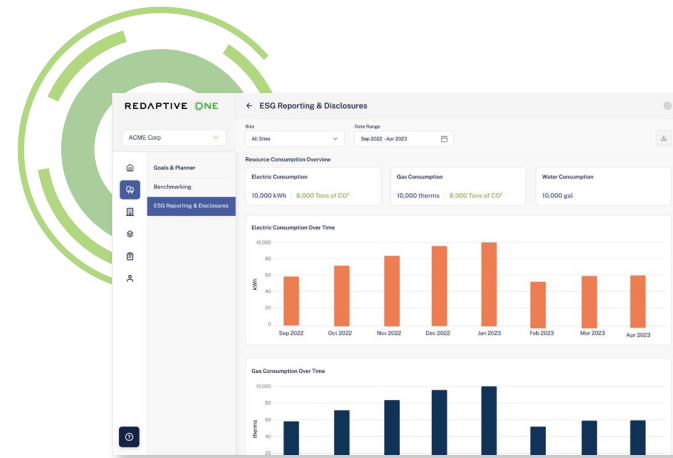
At **Redaptive**, we understand these complexities and have tailored our solutions to address the unique needs of different stakeholders within your organization. Together, we can overcome the hurdles and unlock the path to sustainable success.

**REDAPTIVE ONE**



IoT electric, gas, and water meters designed for easy installation, scalable, highly granular, and cost effective. Our metering technology enables real-time data visibility across your building portfolio.

# One Single Platform for Multi-dimensional Insights

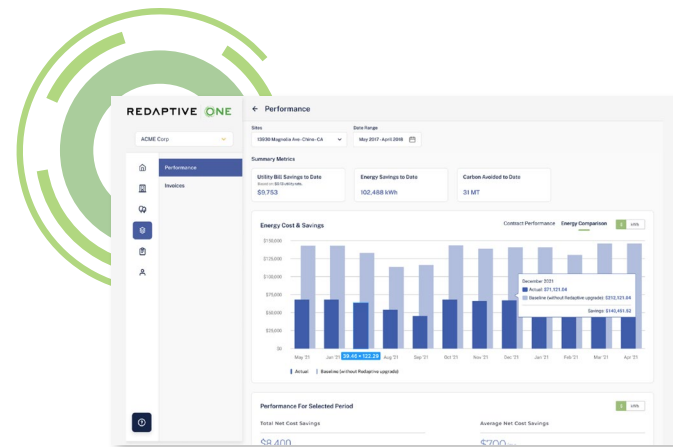
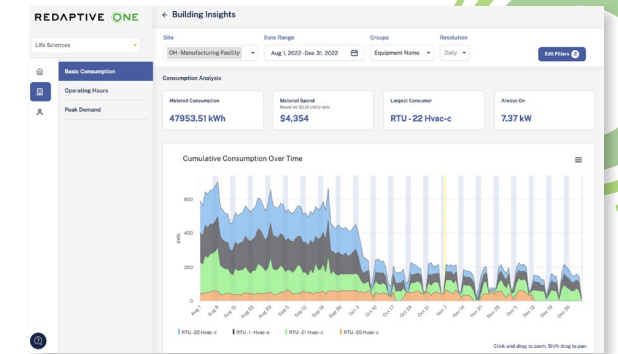


## Sustainability Data

- Streamline data collection for electric, gas, and water consumption.
- Enable API integration with Energy Star Portfolio Manager and many 3rd party applications.
- Improve tenant and occupant engagement, encouraging energy efficiency and resource management.

## Building Insights

- Identify scheduling opportunities, peak demand and load curtailment opportunities.
- Monitor critical equipment for repair and maintenance diagnosis.
- Identify energy waste and building outliers.



## Performance Data

- Measure actual kWh saved at the circuit level.
- Enable Measurement and Verification of energy projects.
- Track performance against baselines on projects, across multiple measures.

**Redaptive ONE technology enables digital transformation for high-performance organizations.**

- ✓ Comprehensive Data Access
- ✓ Streamlined Reporting Compliance
- ✓ Efficient Resource Management
- ✓ Performance Tracking
- ✓ Sustainability Impact
- ✓ Optimized Demand Response
- ✓ Financial Transparency
- ✓ Empowered Decision-Making







## Let's unlock the full potential of your organization and build a brighter, more sustainable future together.

With Redaptive ONE, you can overcome multi-stakeholder challenges, drive sustainable practices, and create a positive impact on the environment, society, and your bottom line.

[SCHEDULE A DEMO](#)

Contact us today and embark on your journey towards sustainability success!

**REDAPTIVE**<sup>®</sup>

Tabor Center at 1200 17th Street  
Denver, CO 80202  
[redaptive.com](http://redaptive.com)

© Redaptive 2023. All Rights Reserved.

